



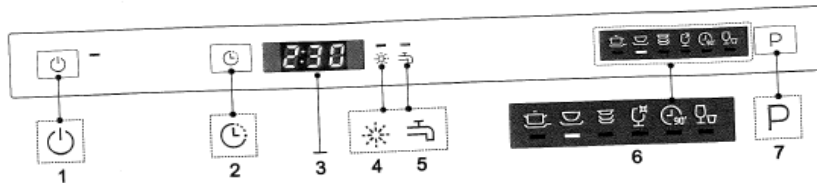
DISHWASHER

Please see the following operational guidelines to ensure optimal usage of the dishwasher:

Date: June 2024

IMPORTANT To get the best performance from your dishwasher, read all operating instructions before using it for the first time.

Control Panel



- 1** Power Button: To turn on/off the power supply.
- 2** Delay Button: To press the button to delay.
- 3** Display screen: To show the reminding time and the state (running state, delay time etc).
- 4** Rinse Aid Warning Light: To be on when the rinse aid dispenser needs to be refilled.
- 5** Faucet Light: To be on when the faucet is opened.

- 6** Program indicator explains as below:
 - Intensive
 - Heavy
 - Normal
 - Glass
 - 90Min
 - Rapid
- 7** Program Button: To press the button to choose the programme.

3. Prior to using for the first time

A. Rinse Aid Dispenser

Rinse Aid Dispenser

The rinse aid is released during the final rinse to prevent water forming droplets on your dishes, which can leave spots and streaks. It also improves drying by allowing water to roll off the dishes. Your dishwasher is designed to use liquid rinse aids. The rinse aid dispenser is located inside the door next to the detergent dispenser. To fill the dispenser, open the cap and pour the rinse aid into the dispenser until the level indicator turns completely black. The volume of the rinse aid container is about 110ml.

Function of Rinse Aid

Rinse aid is automatically added during the last rinse, ensuring thorough rinsing, spot and streak free help the drying.

Attention!

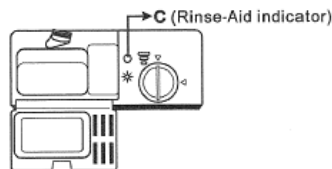
Only use branded rinse aid for dishwasher. Never fill the rinse aid dispenser with any other substances (e.g. Dishwasher cleaning agent, liquid detergent). This would damage the appliance.

When to Refill the Rinse Aid Dispenser

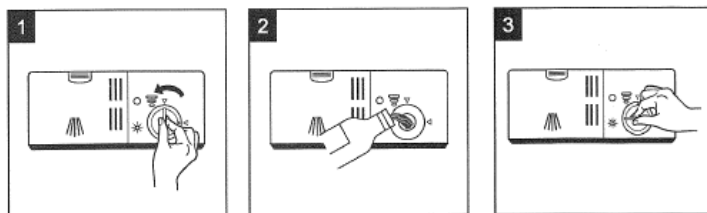
If there is no rinse-aid warning light in the control panel, you can judge the amount of rinse-aid by the color of the optical level indicator "C" located next to the cap. When the rinse-aid container is full, the whole indicator will be dark. As the rinse-aid diminishes, the size of the dark dot decreases. You should never let the rinse aid get below 1/4 full.

As the rinse aid diminishes, the size of the black dot on the rinse aid level indicator changes, as illustrated below.

- Full
- 3/4 full
- 1/2 full
- 1/4 full - Should refill to eliminate spotting
- Empty



How to fill the Rinse Aid Dispenser

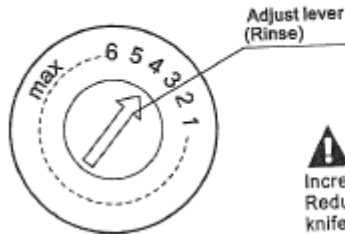


- 1** To open the dispenser, turn the cap to the "open" (left) arrow and lift it out.
- 2** Pour the rinse aid into the dispenser, being careful not to overfill.
- 3** Replace the cap by inserting it aligned with "open" arrow and turning it to the closed (right) arrow.

NOTE: Clean up any rinse aid spill during filling with an absorbent cloth to avoid excessivs foaming during the next wash. Don't forget to replace the cap before you close dishwasher door.



Adjusting Rinse Aid Dispenser

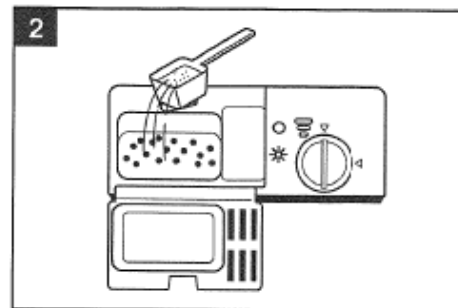
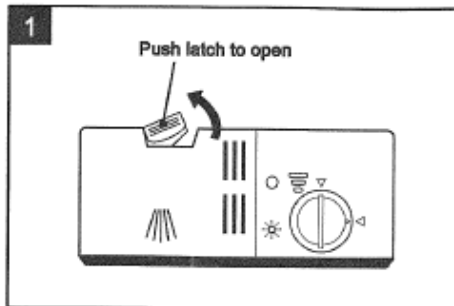


The rinse aid dispenser has six or four settings. Always start with the dispenser set on "4". If spots and poor drying are a problem, increase the amount of rinse aid dispensed by removing the dispenser lid and rotating the dial to "5". If the dishes still are not drying properly or are spotted, adjust the dial to the next higher number until your dishes are spot-free. The recommended setting is "4". (Factory value is "4".)

NOTE:

Increase the dose if there are drops of water or lime spots on the dishes after washing. Reduce it if there are sticky whitish stains on your dishes or a bluish film on glassware or knife blades.

Adding detergent to dispenser



NOTE:

- If the lid is closed: push the latch to open.
- Always add the detergent just before starting each wash cycle.
- Only use branded detergent and rinse aid for dishwasher.

WARNING!

Dishwasher detergent is corrosive!
Take care to keep it out of reach of children.

Proper Use of Detergent

Use only detergent specifically made for use in dishwashers. Keep your detergent fresh and dry. Don't put powder detergent into the dispenser until you're ready to wash dishes.

Fill in detergent dispenser

Fill the detergent dispenser with detergent. The marking indicates the dosing levels, as illustrated on right:

- A** Location of main wash cycle detergent.
- B** Location of pre-wash cycle detergent.

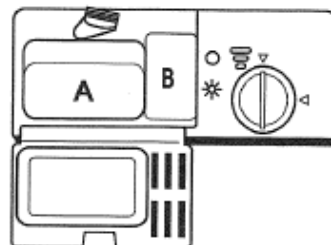
Please observe the manufacturers dosing and storage Recommendations as stated on the detergent packaging.

Close the lid and press until it locks in place.

If the dishes are heavily soiled, place an additional detergent dose in the pre-wash detergent chamber. This detergent will take effect during the pre-wash phase.

NOTE:

- You see information about the amount of detergent for the single program on page 9.
- Please be aware that soiling levels and water hardness can effect wash results.
- Please observe the manufacturer's recommendations on the detergent packaging.





5. Starting a washing programme

Wash Cycle Table

Program	Cycle Selection Information	Description of Cycle	Detergent pre/main	Running time(min)	Energy (kWh)	Water (l)	Rinse Aid
Intensive	For heaviest soiled crockery, and normally soiled pots, pans, dishes etc with dried on soiling.	Pre-wash(50 \checkmark) Wash (55 \checkmark) Rinse Rinse(70 \checkmark) Drying	5/17.5g (1or2 pieces)	140	0.85	9.7	★
Heavy	For heavily soiled loads, such as pots, plates, glasses and lightly soiled pans.	Pre-wash Wash (60 \checkmark) Rinse Rinse (70 \checkmark) Drying	5/17.5g (1or2 pieces)	120	0.65	7.8	★
(* AS/NZS 2007. 1)	For normally soiled loads, such as pots, plates, glasses and lightly soiled pans. standard daily cycle.	Pre-wash Wash (47 \checkmark) Rinse Rinse(50 \checkmark) Drying	5/17.5g (1 pieces)	135	0.45	7.4	★
Glass	For lightly soiled loads, such as glasses, crystal and fine china.	wash(45 \checkmark) Rinse Rinse(60 \checkmark) Drying	22.5g (1 pieces)	70	0.45	6	★
90 min	For lightly soiled crockery and glass.	Wash(65 \checkmark) Rinse(70 \checkmark) Drying	22.5g (1 pieces)	90	0.65	7	★
Rapid	A shorter wash for lightly soiled loads and quick wash.	Wash (40 \checkmark) Rinse Rinse	15g	30	0.32	5.8	

NOTE:

■ () Means: need to fill rinse aid into the Rinse-Aid Dispenser.

*AS/NZS 2007.1 : This program is the test cycle. The information for comparability test in accordance with AS/NZS 2007.1, as follows:

- Capacity: 6 setting
- Rinse aid setting: 6
- Open the door slightly 50mm to assist in drying of the dishes after every wash

Turning On the Appliance

Starting a wash cycle

1. Draw out the basket(see the section entitled " Loading the Dishwasher basket").
2. Pour in the detergent (see the section entitled " Detergent and Rinse Aid").
3. Insert the plug into the socket. The power supply is 220-240 VAC 50 Hz, the specification of the socket is 10 A 250 VAC.
4. Make sure that the water supply is turned on to full pressure.
5. Press the program button, the wash program will be changed as following direction:

Normal->Glass->90 min->Rapid->Intensive->Heavy->Normal;

If a program is selected, the corresponding light will be on. Then press the Start/Pause button, the dishwasher begins to start.

NOTE:

When you press the Start/Pause button to pause during washing, the program light will stop blinking and the dishwasher will sound every minute unless you press the Start/Pause button to start.

Important Notes:

- Please refrain from using dishwashing liquid in this dishwasher. Only the provided dishwashing Powder is suitable for this appliance. The dishwashing liquid supplied is intended exclusively for manual handwashing purposes. Dishwashing powder and liquid are available at reception 24/07.
- Please do not hesitate to seek our help if you require further assistance.